



## Pegasus Intelligence LLC بيجاسوس انتيليجينس ذ.م.م

### THE WORLDS FIRST AMPHIBIOUS UN-CREWED GROUND VEHICLE.

#### A.A.S.P Amphibious Assault Support Platform.

The A.A.S.P. employs advanced technology, selective automation and intuitive interfaces to put highly capable systems at the fingertips of soldiers and marines.

A.A.S.P. increases the safety and effectiveness of all war fighters and at the same time reduce risks to the communities in which they operate.

A.A.S.P is a medium sized semi-autonomous amphibious unmanned platform with autonomous navigation system and command interface capable of supporting a variety of combat and logistics missions.

#### Amphibious

A.A.S.P has the ability to conduct amphibious operations from ship to shore, operating out of the wet well of an LHD to shore and continue on to recon littoral zones and beyond carrying a 700kg payload on sea and 1600kg on land

#### Multiple roles

- Beach reconnaissance
- Force multiplier.
- Hunter killer.
- Last mile logistics.

A.A.S.P is rugged, simple to operate, rapid to deploy and is capable of being equipped with an array of advanced sensors tailored to operational requirements.



#### SYSTEM FEATURES

- Battery with built in diesel generator
- Jet propulsion system for Amphibious operations
- Autonomous and remote control.
- Soldier operated via chest rig and android device
- Obstacle detection and avoidance.
- Waypoint navigation.
- Thermal drive camera
- Instant Data erase or B.I.P.
- Multiple payload options.
- Health and Usage Monitoring.
- "L" band encrypted suite B and AES 256 Radio equipment (Standard)
- Swarming capability, multiple A.A.S.P. can swarm on a target.
- Amphibious operation with its inbuilt jet propulsion system travels at a speed of 3-5 km/h in open water.





## Pegasus Intelligence LLC بيجاسوس انتليجينس ذ.م.م

The A.A.S.P. user interface provides real time information on location of assets in the battle space as well as mission profiles and intelligence.

Ability to insert hostile locations onto map using NATO joint military symbology.

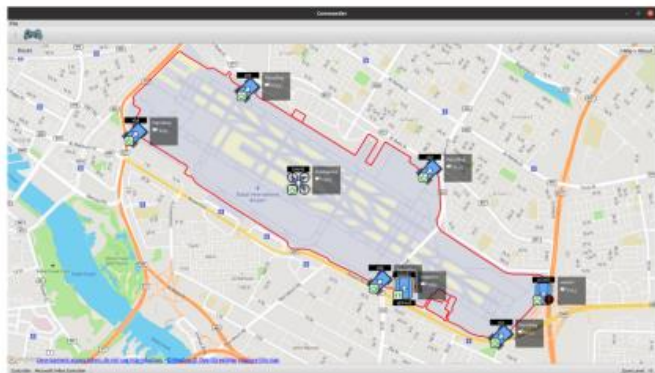
Operator can take command of any asset assigned to their call sign as well as integrate with other assets such as aerial drones.

The user interface also provides health and usage monitoring of each individual asset.

- One node.
- SROS Security.
- Swarm Mentality.
- Each PCS/C2 has a database.
- Real-time.
- Can have multiple Controllers.



- Selected UGV glows on the relevant PCS/C2 only.
- Callout buttons.
- Ops Mode shown in bottom left corner.
- UGV name above icon.





**Pegasus Intelligence LLC**  
بيجاسوس انتيليجينس ذ.م.م

**A.A.S.P.**

Mission Adaptable Platform System.

CHARACTERISTICS	
Power	48v dc
Battery	200Ah
Payload	1500kg
Over charge protection	Yes
Charge time	On demand from built in generator
Steering land	Skid steer
Steering sea	Jet propulsion and steerable jet
Operational duration	100 hours payload dependent
Turning circle	Own footprint
Control	C2 based software, and phone-based app
Braking Land	Electro-mechanical
Emergency stop	Physical stop button
Speed	>20kmh
GPS Interface	Yes



WEIGHT & MEASURES without payload	
Weight	1100kgs
Length	L:2200mm
Height / Width	H:990mm W:1830mm



**Pegasus Intelligence LLC**

Andrew Grunstein  
CEO

Dubai Silicon Oasis  
License: 50943ACS

+971 58 581 8666  
ag@pegasusintelligence.ae